

TRANSFER PAGE 71d-363

SEC. 13

49

1413  
2324

PANORAMA PARK

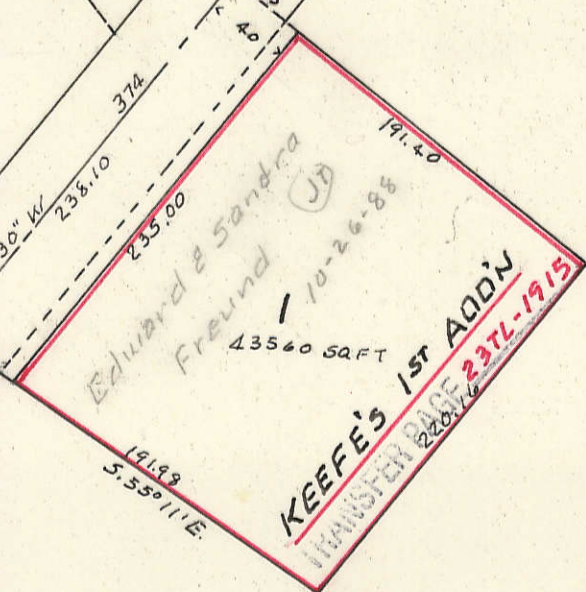
See Volume Labeled  
Riverdale - Panorama Park

Marriet E. Keefe  
5-23-81

L/E Emily Havill  
Dec'd 2-6-83

7-11-85  
10431-85

21.38 Ac.



Corrosion Control Service

9-8-2000  
262314-00

DRIVE

(DAVENPORT - LECLAIRE ROAD)

SEC. 23

7

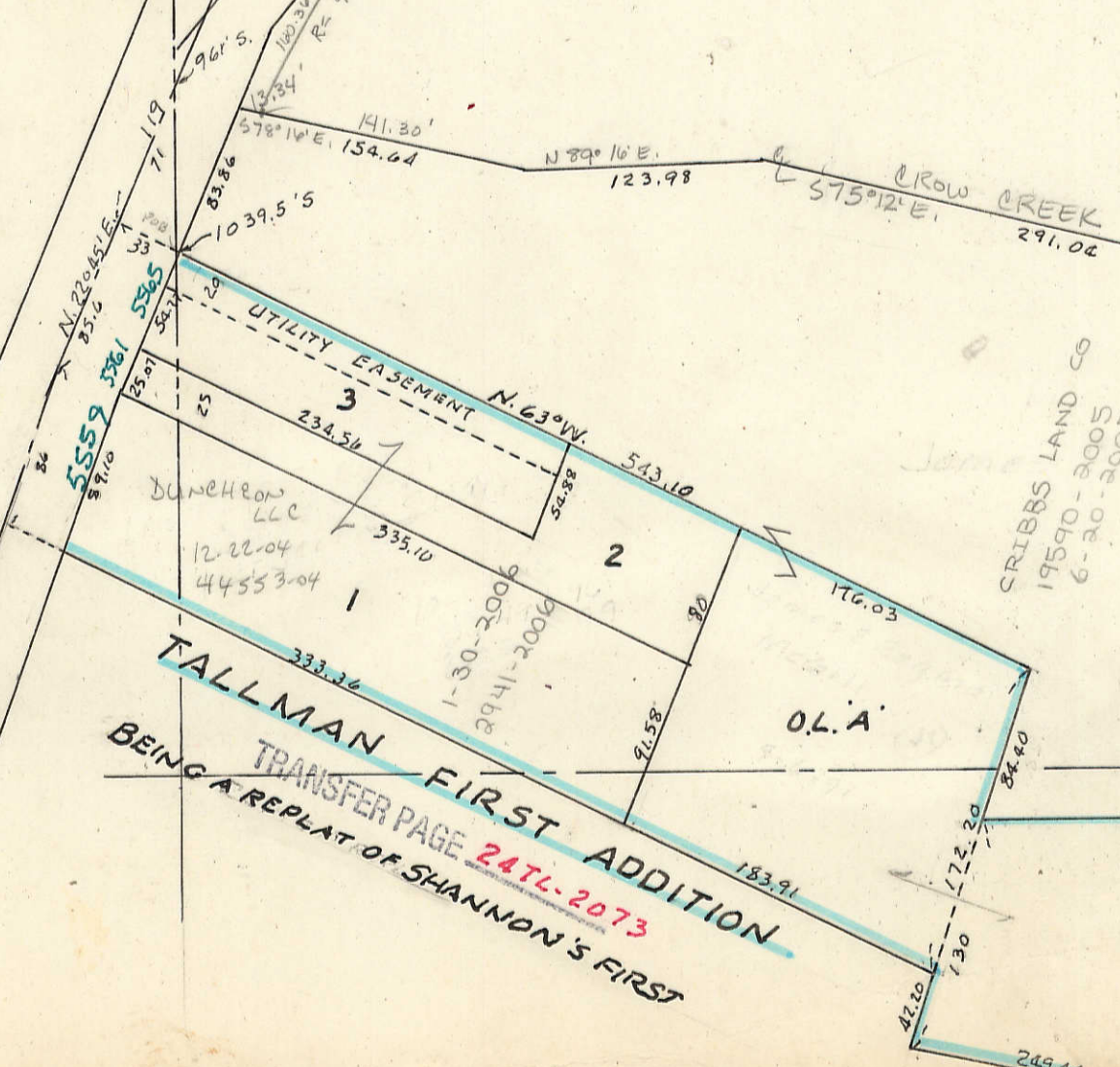
CORROSION CONTROL SERVICE, INC.  
6-20-90  
11151-90

VALLEY

CORROSION CONTROL SERVICE INC  
1-4-2006  
330-2006

SURVEY  
#44578-2004  
12-22-2004

3



CRIEBBS LAND CO  
19590-2005  
6-20-05

TALLMAN FIRST ADDITION  
TRANSFER PAGE 241c-2073  
BEING A REPLAT. OF SHANNON'S FIRST

17

U.S. Hwy. # 67

SEC. 24-78-4